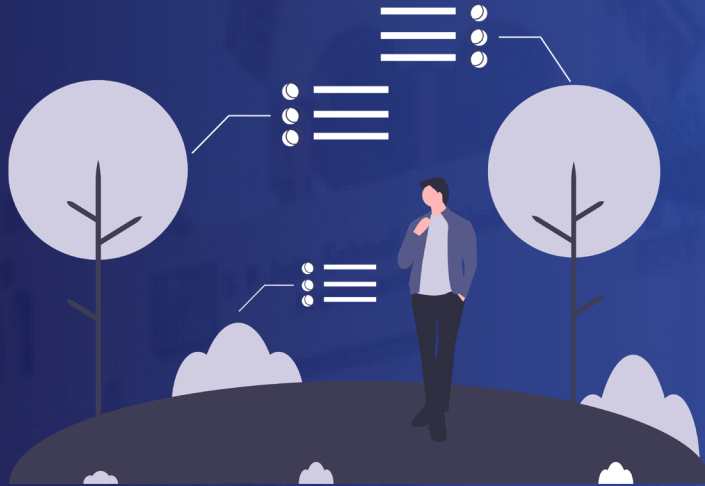


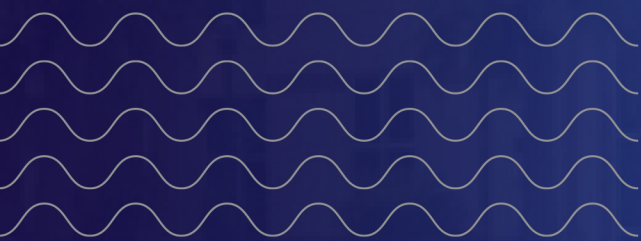
+ GENERAL GUIDELINES

- Participants must be students currently enrolled in their respective university.
- Undergrad, Foundation, Diploma and Postgraduate students are welcomed to participate.
- Teams and Individuals will be disqualified from the event if any misconduct is found.
- All submissions have to be made through the google link attached in this rule book.
- All entries will be judged by the individual contest's committed jury and their decision is considered as the final verdict.
- Plagiarism of any content will not be accepted and any participant caught in the act will lead to immediate disqualification.
- All the ideas / submissions provided must be made such that they do not violate the laws of the land that they are based in.
- Insulting any belief, faith, religion, etc. through any solution is not allowed.



+ INVOLVE

Solve oppressing global
problems using innovative
solutions



+ INVOLVE GUIDELINES

3 GOOD HEALTH
AND WELL-BEING



THEME

SDG 3: Ensure healthy lives and promote wellbeing for all at all ages

Theme includes: occupational health and safety, access to medicines, access to quality essential health care services, air quality, and water quality.

INVOLVE

InVolve is a Social Innovation and Corporate Social Responsibility focused event where participants will have to demonstrate out-of-the-box thinking to provide innovative business solutions (products or services) for a major issue that the world is facing today.

Learn more about SDG No. 3 here: <https://www.who.int/sdg/targets/en/>

COMPETITION STRUCTURE & RULES

EVENT SCHEDULE ROUND 1.

- Student may participate as an individual or as a team (**max 5 members**).
- Entry must include a clear and concise written submission which describes the following:
 - I. Define the problem being addressed
 - II. Explain the economic, environmental, social challenges associated with the problem and the current size of the same.
 - III. Propose how you plan to solve this problem.
 - IV. Explain your strengths including team and resources currently available and what is expected in terms of financial and non-financial resources.
 - V. Explain potential economic, environmental and social impact that you expect to achieve and the linkage to United Nations Sustainable Development Goals.
- Submission must be uploaded through the submission link before **27th March 2020**.
- 8 teams with the best ideas will be selected to proceed to round 2.
- Teams are advise to be prepared for video submission prior to round 2.

+ INVOLVE GUIDELINES (CONT')

COMPETITION STRUCTURE & RULES (CONT')

EVENT SCHEDULE ROUND 2

- Selected teams will be required to prepare and submit a presentation video through a separate submission link.
- Presentations should be no more than 8 minutes.
- Teams will then have a scheduled Q&A session with the judges.
- All analysis and solutions are expected to be comprehensive, factually correct and the source of each fact provided must be mentioned.

COMPETITION DATES

- 27th March 2020: Closing of word submission.
- 29th March 2020: Qualified teams will be notified via email.
- 1st & 2nd April 2020: Qualified teams video submission and scheduled Q&A Session with the Judges.

SUBMISSION LINK

<https://forms.gle/eiRNFo39EyohWMHp6>

PRIZES

First Place – AED 500 + Internship with AIESEC & Certificates

Second Place – AED 300 + Internship with AIESEC & Certificates

Third Place – AED 200 + Internship with AIESEC & Certificates

powered by



For further clarification on this competition please contact:

bhavish.bs18sgp041@spjain.org